

*Be connected. Be prepared. Be Berkeley.*

# Wildfire Evacuation

## City of Berkeley



# Presentation Outline

## What We'll Cover

- Wildfires in Berkeley
- Fire weather
- Preparing to evacuate
  - Pack a Go Bag
  - Sign up for Emergency Alerts
  - Make a Plan
- How to Evacuate and What to Expect
- Effects of Wildfires Outside Berkeley

## What You Should Learn

- How to make a “Go Bag”
- How to get info during a fire
- What is in an evacuation plan
- How to evacuate safely on foot and by car
- Where to go after you evacuate







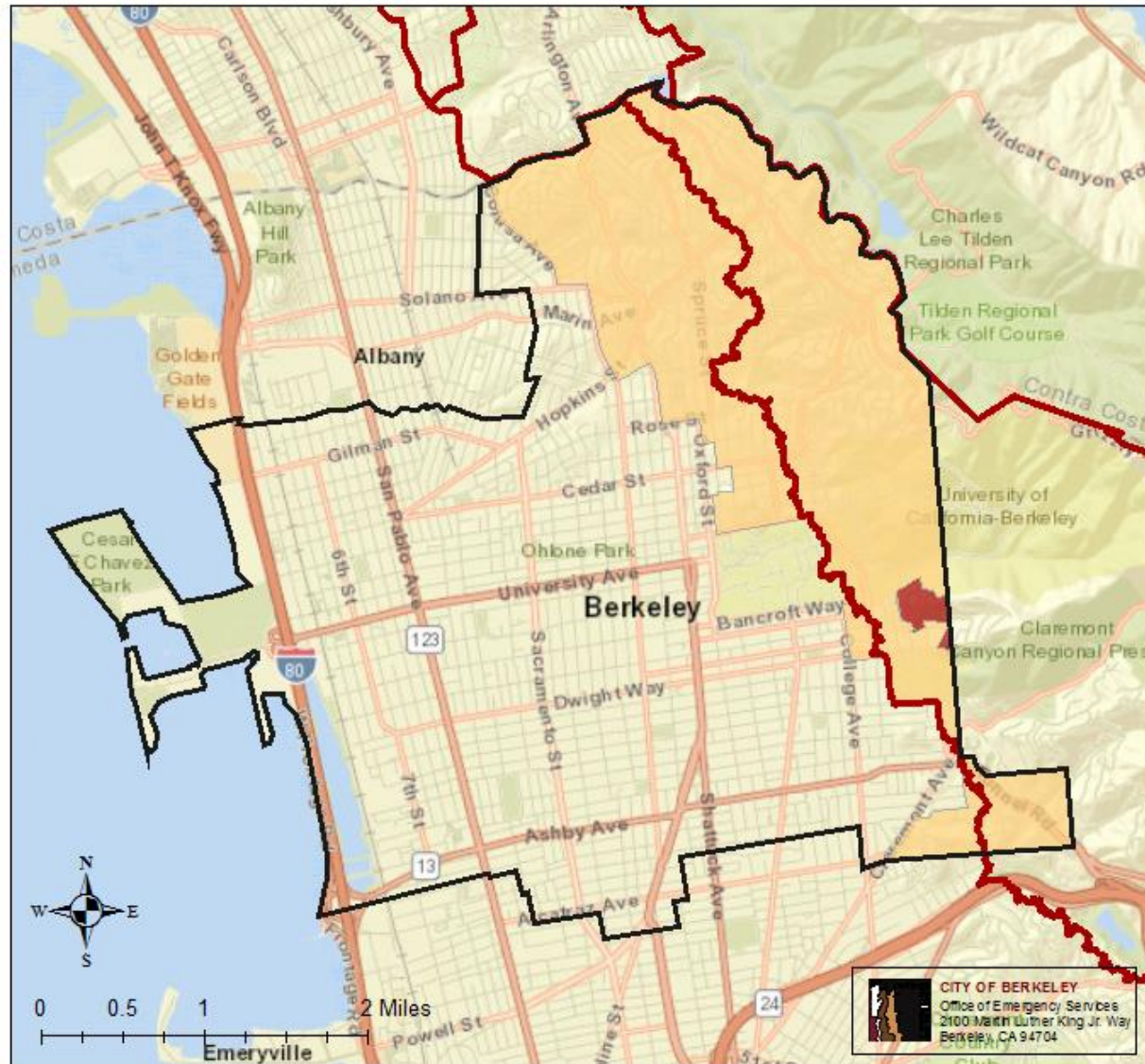
Wildcat Canyon in May 2019



# Be Ready to Evacuate During Fire Weather

- Fire Weather: High Winds and Low Humidity
  - Red Flag Warning
  - Extreme Fire Weather Warning
- Fire Weather Readiness Actions
  - Review evacuation method and routes
  - Check with evacuation partners
  - Agree on meeting spot
  - Plan shelter for household and pets
  - Check go-bag and leave near door/in vehicle
  - Back car into driveway, park off-street
  - Avoid actions that could start fire (smoking, BBQ, yard maintenance)
  - Set out evacuation outfit

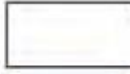

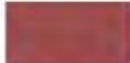


# Wildfire Threat in Berkeley



-  City of Berkeley
-  CA Dept of Forestry, Very High Fire Severity Zone

## Berkeley Fire Zones

-  Hazardous Fire Zone 1
-  Hazardous Fire Zone 2
-  Hazardous Fire Zone 3

# Power Outages During Fire Weather

No single factor drives a Public Safety Power Shutoff. Some factors include:

A RED FLAG WARNING DECLARED BY THE NATIONAL WEATHER SERVICE



LOW HUMIDITY LEVELS GENERALLY 20% AND BELOW



FORECASTED SUSTAINED WINDS GENERALLY ABOVE 25 MPH AND WIND GUSTS IN EXCESS OF APPROX. 45 MPH, DEPENDING ON LOCATION AND SITE-SPECIFIC CONDITIONS SUCH AS TEMPERATURE, TERRAIN AND LOCAL CLIMATE



CONDITION OF DRY FUEL ON THE GROUND AND LIVE VEGETATION (MOISTURE CONTENT)



ON-THE-GROUND, REAL-TIME OBSERVATIONS FROM PG&E CREWS



## WEATHER ALL CLEAR

After the extreme weather has passed and it's safe to do so, our crews begin patrols and inspections.



## PATROL & INSPECT

Crews visually inspect every mile of the lines to look for potential weather-related damage to the lines, poles and towers. This is done by vehicle, foot and air.



## ISOLATE & REPAIR DAMAGE

Where damage is found, crews work to isolate the area so other parts of the system can be restored. Crews work safely and as quickly as possible to make repairs.



## RESTORE POWER

Once it is safe to energize, a call is made to the PG&E Control Center to complete the energization process. Power is then restored to customers.



## NOTIFY CUSTOMERS

Customers are notified that power has been restored.

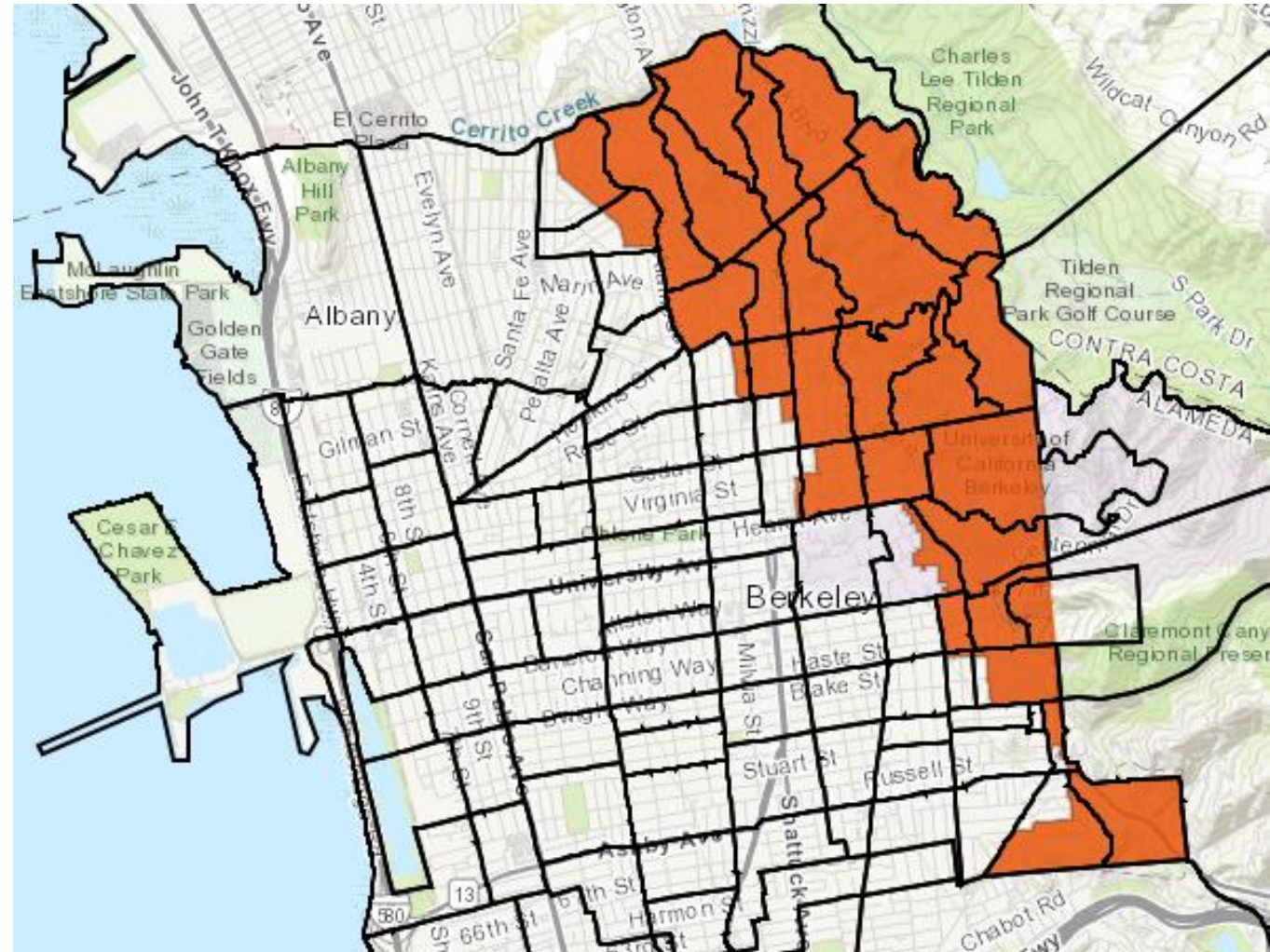
# Go Bag



- Flashlight
- Cell Phone
- Paper Map
- Water Bottle + Snack
  - Radio
- Cell Phone Charger
- List of Medications
- Extra Glasses/Contact Lenses
- Change of clothing
- Extra set of car keys, credit cards, and cash
- Copies of important documents (Paper + Thumb Drive)
  - Whistle
- Pet collar/leash, carrier, vaccination records
- Essential medical equipment

# Know Your Neighborhood

- Practice two ways to drive out and two ways to walk out
- Plan with your neighbors across the street and next door on both sides for alerting and assisting with evacuation
  - Share information on how to evacuate
  - Give a ride to a neighbor who can't drive
  - Evacuate pets if you are at work/on vacation
- Trace potential routes on a map (consider paths!)
- Evacuation orders could be given for:
  - Specific buildings
  - Street blocks
  - Larger areas



# Temporary Refuge Areas

- Determined during the incident
- Close to evacuation zone, but outside hazard area
- Used by:
  - People evacuating on foot
  - Drop-off point for people driven by others
- NOT used by:
  - People evacuating by car
- Information and transportation only
- Accessible transportation will move people from Refuge Areas to Shelters/Evacuation Centers



# Know How to Get Information

- AC Alert- REGISTER TODAY: [www.acalert.org](http://www.acalert.org)
  - Phone Call
  - Text Message
  - Email
- Wireless Emergency Alert
- Radio: 1610 AM
- Website/Social Media
- In-Person Message from Neighbor or Official



# Wildfire Scenario



Berkeley Extreme Fire Danger Day

A small fire starts in Tilden Park

Winds are blowing from the East

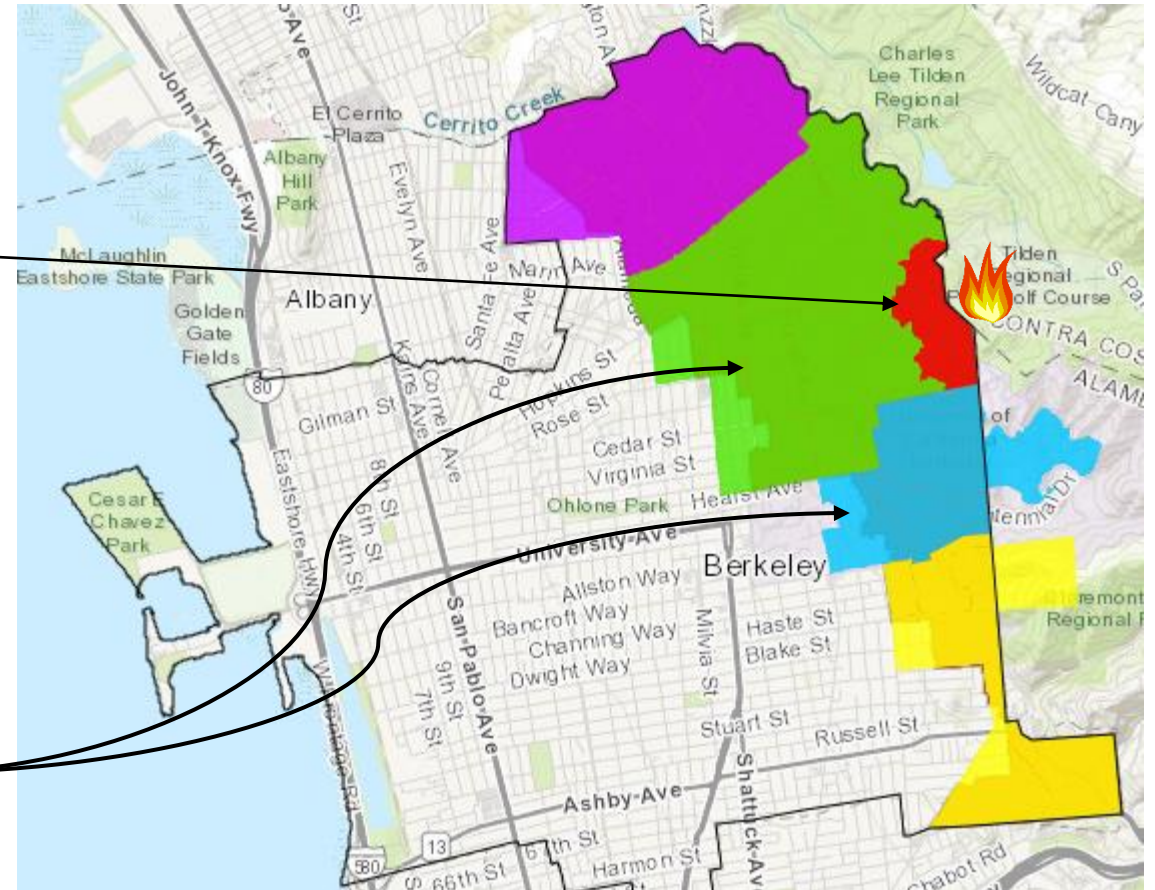
# Types of Evacuation Messages

## Evacuate Now

- Gather people, pets and your go bag and leave as quickly as possible
- Check on neighbors to help them leave on your way out
- Go to a Temporary Refuge Area if you can't drive out of the area

## Prepare to Evacuate

- If it will take you longer to evacuate, LEAVE NOW
- Confine pets to one room, so they are easier to find
- Pack your car and back it into your driveway
- Prepare your house (tips on Wildfire Checklist)
- Stay tuned to emergency information sources
- IF YOU FEEL UNSAFE, EVACUATE



# Decide you need to Evacuate Now!

- **If you feel threatened, leave immediately!**
  - Visible fire in nearby home with strong winds
  - Winds carrying smoke and embers through neighborhood
- If you get an “Evacuate Now” message, leave immediately!:
  - Alert on your Phone
  - Radio: 1610 AM
  - Nearby Fire or Embers
  - In-Person Message from Neighbor or Official
- Check Alert Methods for:
  - Recommended direction to evacuate
  - Designated Temporary Refuge Areas



# Grab and Go!

- Grab Your...
  - Household members and pets
  - Go-bag
  - Change into evacuation outfit, if you have time (heavy shoes, cotton clothing, bandana, hat, reflective outerwear)
  - Last minute items (see list)
- Check on your neighbors and make sure they are leaving
  - Offer a ride if possible

## If I Have No Time

- People and Pets
- Go Kit (By Front Door)

## If I Have 5 Minutes

- Medications (In Bathroom)
- Glasses (In Bedroom)
- Laptop and Charger (On Desk)
- Cell Phone Chargers (In Bedroom)
- Essential Medical Equipment (In Bedroom and Bathroom)

## If I Have 30 Minutes

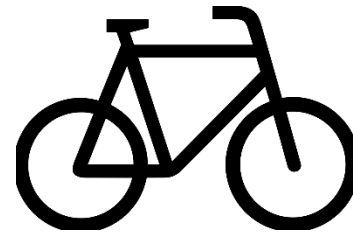
- Photo Albums (Hallway Closet)
- Family Portraits (Wall in Living Room)
- Stuffed Animals and Treasured Family Items (Write List of Locations!)
- Changes of Clothing for Everyone (Bedrooms)

# Evacuate!

## With Car



- Drive routes as instructed by officials
- Do not block public safety personnel or vehicles
- If you can't get out and have to leave your car DO NOT BLOCK STREETS
- GO TO: Meetings Spot (far away from fire hazard zone)



## Without Car

- Paths with steps may provide the most direct escape route
- Wear reflective outerwear if possible
- GO TO: Temporary Refuge Area (outside of fire hazard zone, depends on specific fire)

**If you are stuck and can't leave, call 911. Help may be very delayed**

# Evacuation Center or Shelter

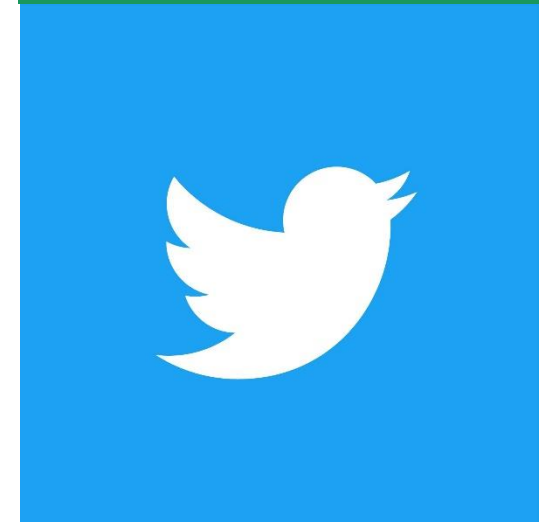
- May take a few hours to set-up
- Locations will be shared via AC Alert, radio, and website
- Will have food, water, information, and a place to rest.
- Will be accessible to people with disabilities
- Not very comfortable- find alternative site if possible
  - Nearby Friend/Family
  - Hotel
  - Consider spots for pets



# Stay Updated on the Situation

Check media and alerting systems for the latest information:

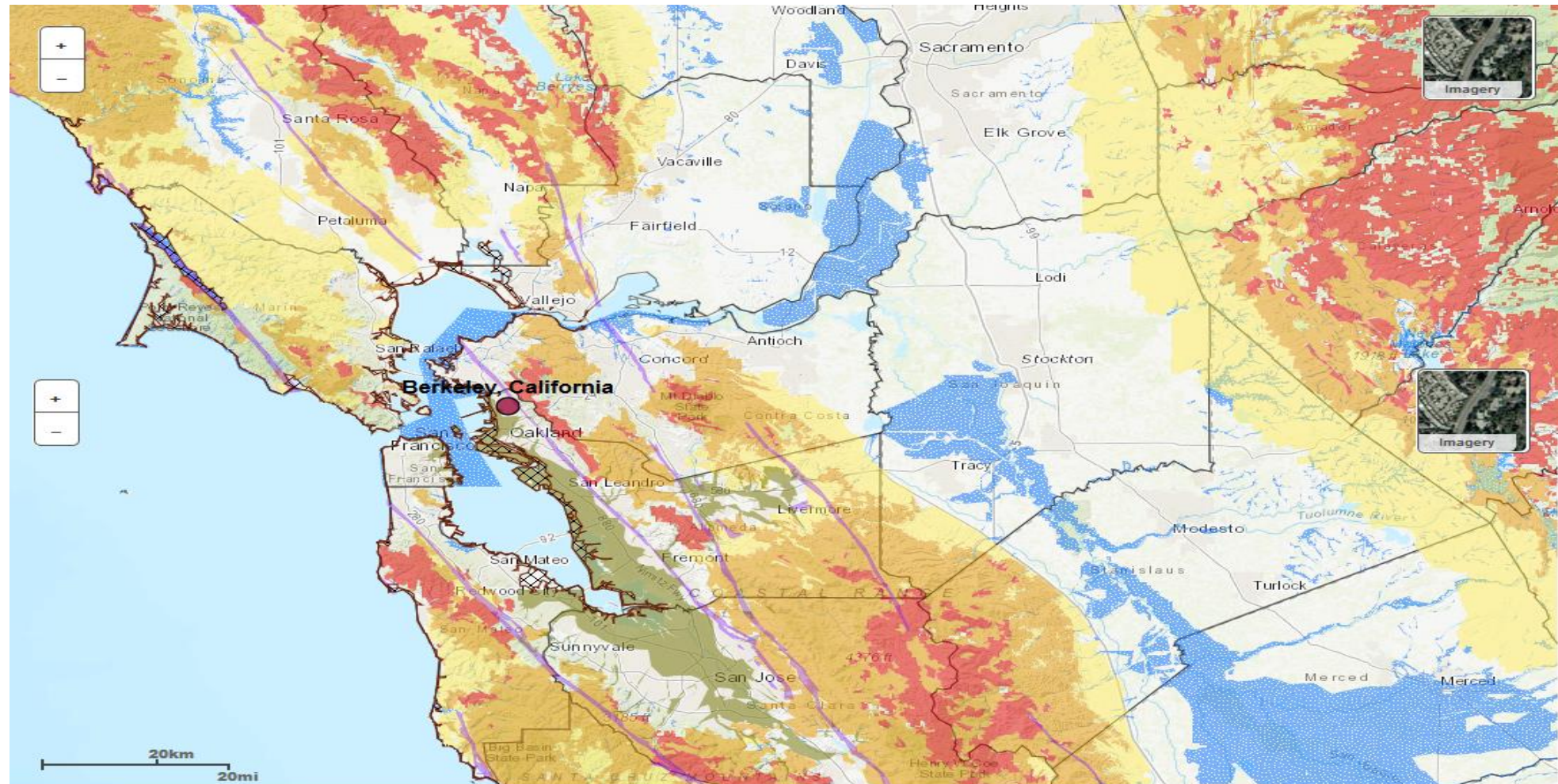
- City of Berkeley Website
- AC Alert/Nixle Messages
- City of Berkeley Twitter and NextDoor
- Radio (Local News Channels)
- TV (Local News Channels)
- Posted Announcements at Evacuation Centers/Shelters



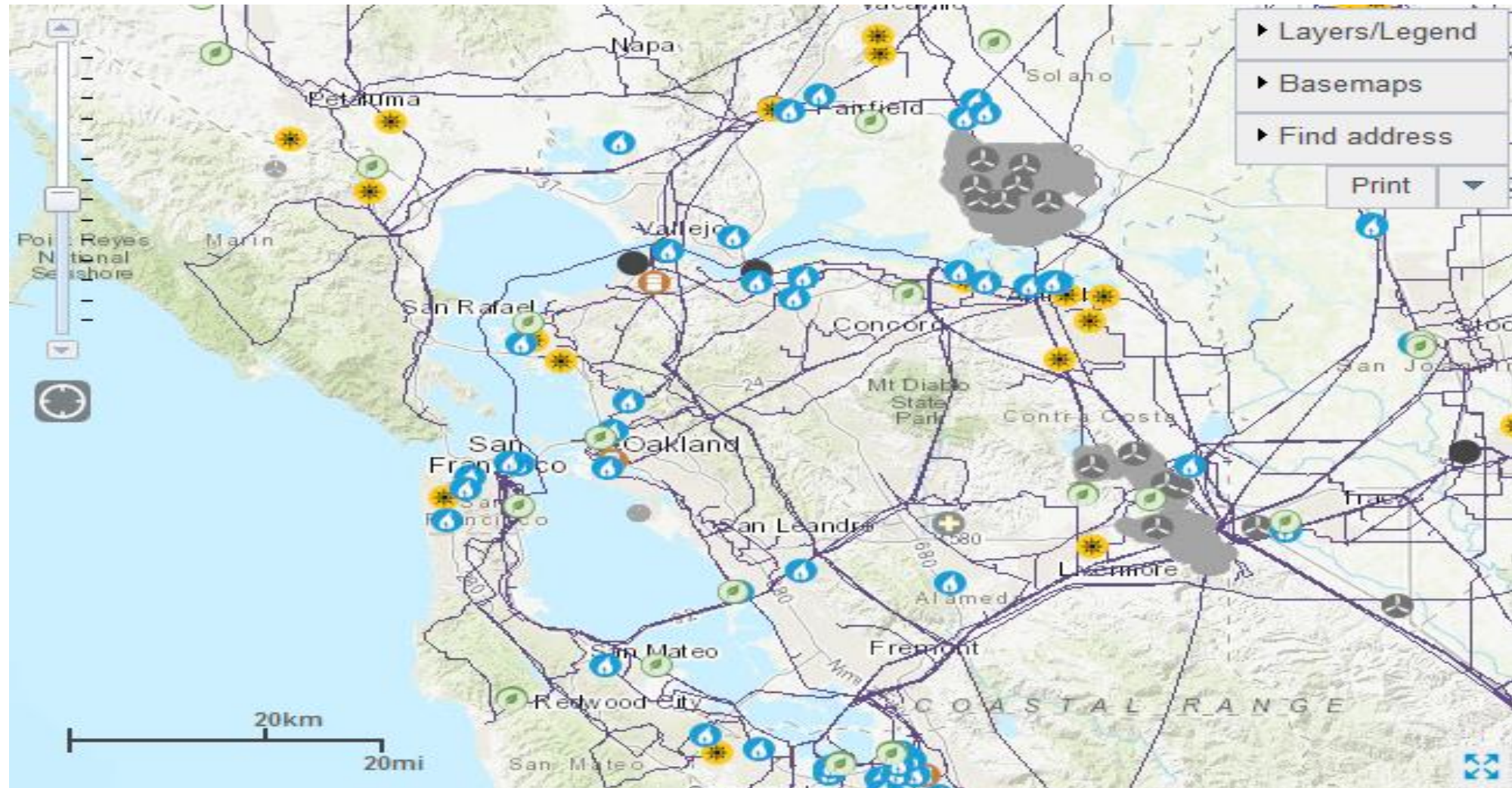
# Effects of Wildfires Outside Berkeley

- Power outages, due to
  - Public Safety Power Shutoff (PSPS) by PG&E, or
  - Fire-related damage to transmission lines
  - Inspection of lines after shutoff is over (or fire is under control) may take 1-3 days (or more)
- Poor air quality - smoke & particulate matter from fires elsewhere

# Fire Severity in State Responsibility Areas (SRAs) **red**=very high, **orange**=high, **yellow**=moderate (Cal MyHazards)



# Transmission Lines & Power Plants in SF Bay Area (US Energy Information Administration)



# Potential impacts of an extended power outage

- Disruption of communications (phones, radios), transportation (BART, traffic signals)
- Closure of retail businesses, grocery stores, gas stations, ATMs & other services
- Spoilage of perishable food & medicines in refrigerators and freezers
- Medical devices that need power won't work
- Heating & air conditioning won't operate

# Prepare for a power outage (1)

- Sign up for AC Alert & have a battery powered AM/FM radio (1610 AM, KPFA & KPFB)
- What items do you need that use electricity?
- How long can your refrigerated medicines be stored at higher temperatures?
- How can you power a medical device that you need? (e.g., ResMed Power Station II)
- Get CO detectors with battery backup

# Prepare for a power outage (2)

- Get a battery backup for a cordless phone's base station (not needed for a landline)
- Have a flashlight for each person in the house
- Make sure you have enough extra batteries and enough water & nonperishable food
- Get a thermometer to check fridge & freezer temperature after power is restored
- Keep mobiles, etc. charged & gas tank full

# During an extended power outage

- Keep refrigerators (4 hrs) & freezers (48 hrs) closed – use food that doesn't need cold
- Avoid CO poisoning - use generators/camp stoves/grills outdoors & away from windows. Do not use a gas stove to heat your home
- Disconnect electronics (and appliances) to avoid damage from power spikes & surges
- Check on your neighbors, esp. seniors & kids

# After an extended power outage

- Throw away any perishable food
  - that has been at 40° F or higher for two hours or more
  - that has an unusual odor, color, or texture
- If power has been out for 24 hrs or more, discard any medication that should be refrigerated (unless the label says otherwise)
- Reconnect appliances & electronics when safe to do so

# Smoke from Camp Fire 11/2018



# Protecting yourself from wildfire smoke

- Monitor air quality, especially PM2.5 levels
- Stay inside with doors and windows closed
- Use an N95 mask (surgical & dust masks won't work for PM95, nor will one-strap masks) and make sure that it seals properly on your face
- N95 masks do not fit well on children or on people with facial hair, but air purifiers with HEPA filters will reduce N95 exposure

Any Questions?

[OES@cityofberkeley.info](mailto:OES@cityofberkeley.info)

