



# American Red Cross

## Shelter and Disaster Operations



# Who we are

## Mission Statement

The American Red Cross prevents and alleviates human suffering in the face of emergencies by mobilizing the power of volunteers and the generosity of donors.



# Sheltering Overview

- What makes a good shelter?
- How are shelters designated?
- Where are the Berkeley shelters?
- How are the shelters activated?
- How can you help?



# What makes a good shelter?

# What makes a good shelter?



Sleeping Space

# What makes a good shelter?



Sleeping  
Space



American  
Red Cross

**Everyone Is Welcome**



# What makes a good shelter?



Sleeping  
Space



Adequate  
Facilities



Everyone Is Welcome



# What makes a good shelter?



Sleeping  
Space



Parking



Adequate  
Facilities



**Everyone Is Welcome**



# What makes a good shelter?



Sleeping  
Space



Reception Area



Facilities



Adequate  
Parking



Everyone Is Welcome





# What makes a good shelter?



Sleeping Space



Health & Mental Health Services



Facilities



Adequate Parking



Reception



Everyone Is Welcome



# What makes a good shelter?



Sleeping Space



Feeding



Facilities



Adequate Parking



Health & Mental Health Services



Reception



Everyone Is Welcome



- High schools & middle schools good shelters
  - ✓ Have gyms and are usually ADA compliant
  - ✓ Accommodates adults easily
  - ✓ Adequate parking
- High schools & middle schools not usable in session
  - ✓ When in session available only on weekends.■

# How to become a shelter

1. Identify potential site
2. Discuss use with owner
3. Conduct Red Cross site survey
  - Documents square footage and floorplan
  - Determines degree of accessibility
  - Determines potential capacity
4. Sign a Facilities Use Agreement
  - Documents roles & responsibilities for both parties
5. Add to the National Shelter System & daily update





# How to become a shelter

1. Identify potential site
2. **Discuss possibility with owner**
3. Conduct Red Cross site survey
  - Documents square footage and floorplan
  - Determines degree of accessibility
  - Determines potential capacity
4. Sign a Facilities Use Agreement
  - Documents roles & responsibilities for both parties
5. Add to the National Shelter System & daily update





# How to become a shelter

1. Identify potential site
2. Discuss possibility with owner
3. **Conduct Red Cross site survey**
  - Documents square footage and floorplan
  - Determines degree of accessibility
  - Determines potential capacity
4. Sign a Facilities Use Agreement
  - Documents roles & responsibilities for both parties
5. Add to the National Shelter System and daily update

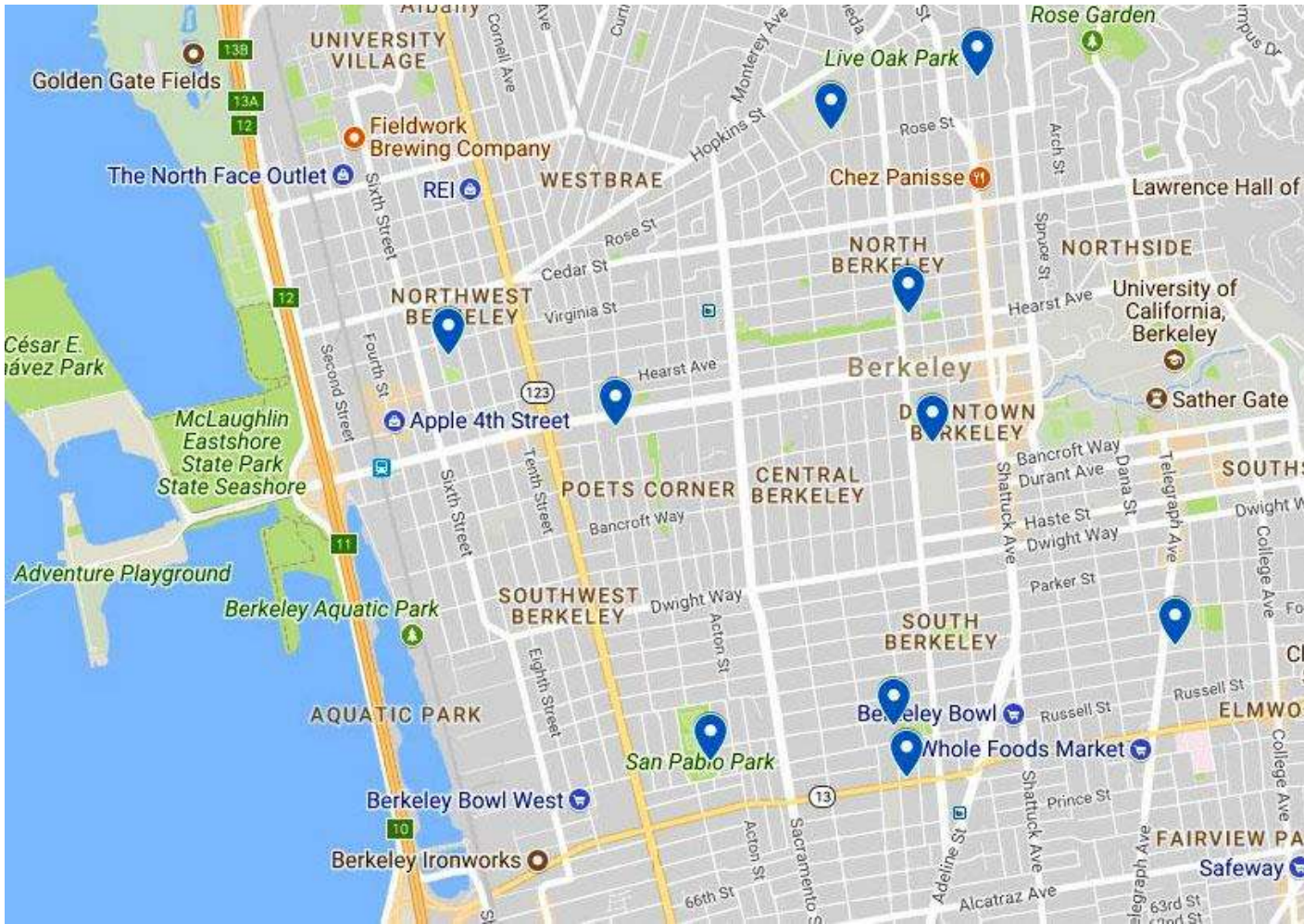


# How to become a shelter

1. Identify potential site
2. Discuss possibility with owner
3. Conduct Red Cross site survey
  - Documents square footage and floorplan
  - Determines degree of accessibility
  - Determines potential capacity
4. **Sign a Facilities Use Agreement**
  - Documents roles & responsibilities for both parties
5. Add to the National Shelter System & daily update

# How to become a shelter

1. Identify potential site
2. Discuss possibility with owner
3. Conduct Red Cross site survey
  - Documents square footage and floorplan
  - Determines degree of accessibility
  - Determines potential capacity
4. Sign a Facilities Use Agreement
  - Documents roles & responsibilities for both parties
5. **Add to the National Shelter System**



**Schools**

- Berkeley High
- Berkeley Adult
- Willard Middle
- MLK Jr. Middle
- Longfellow Middle

**Community Centers**

- James Kenney Rec.
- South Berkeley Senior
- North Berkeley Senior
- Live Oak Recreation
- Francis Albrier Community



**Berkeley designated shelters**

# Typical Disaster Response Process



Incident Commander calls for  
Red Cross Disaster Action  
Team



# Typical Disaster Response Process



Call to Red Cross



Confer with officials and determine sheltering needs

# Typical Disaster Response Process



Call to Red Cross



Shelter Setup

# Typical Disaster Response Process



Call to Red Cross





# Typical Disaster Response Process



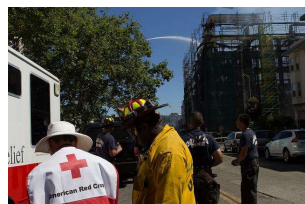
Call to Red Cross



# Typical Disaster Response Process



Call to Red Cross



Confer & Select



Set up the shelter



## Disaster Relief Operation

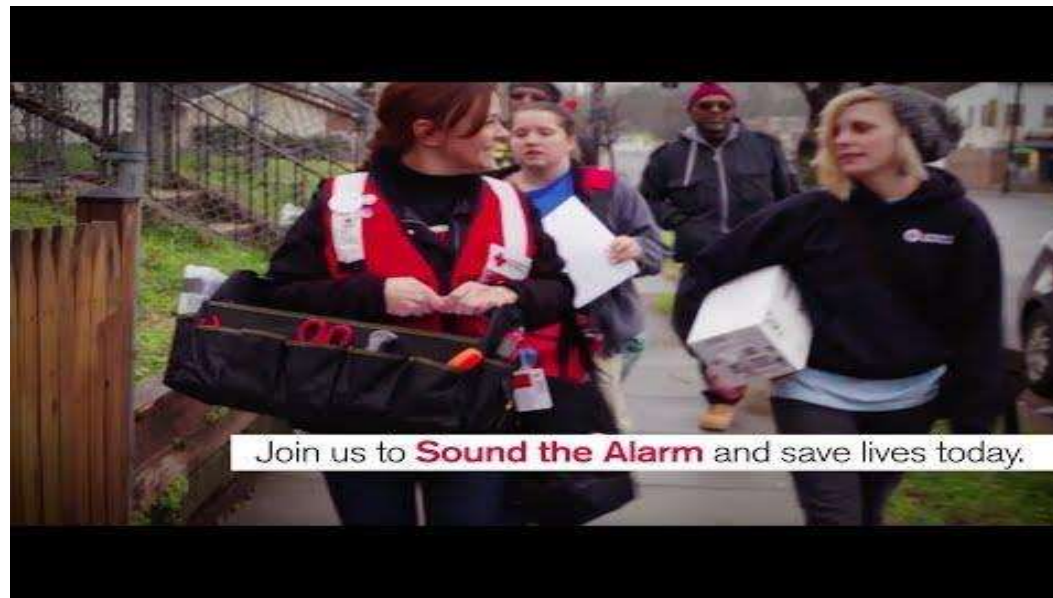
- Using other volunteers-"event-based volunteers"
  - ✓ Non RC shelter trained volunteers will be called first either by the RC or cities
  - ✓ Event-based volunteers will be used if needed
    - ✓ 10,000+ volunteered for North Bay Fire
    - ✓ Need to be trained

- Have your family disaster plan-"be ready to help and not need help"
  - ✓ Disaster supplies and family reunification plan
  - ✓ Train to be a shelter worker
- Become a Red Cross volunteer
  - ✓ Wide array of opportunities to suit everyone's skills
- Notify Berkeley EOC that your facility is safe/ready

- Again be trained
  - ✓ Be part of CERT
  - ✓ Be on Berkeley list of trained shelter workers
- Identify and offer potential shelters
- Help install free smoke alarms



You can help now...



- Untrained event-based volunteers
  - ✓ Not ready to go
  - ✓ Need training, diverts resources
- Non cash donations
  - ✓ Diverts resources to handle materials
  - ✓ Potential to take up needed shelter space